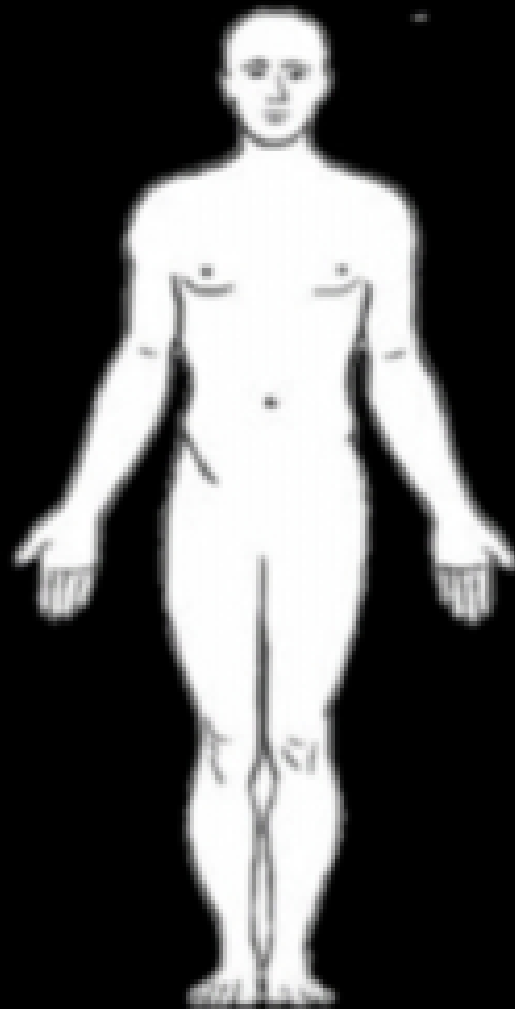


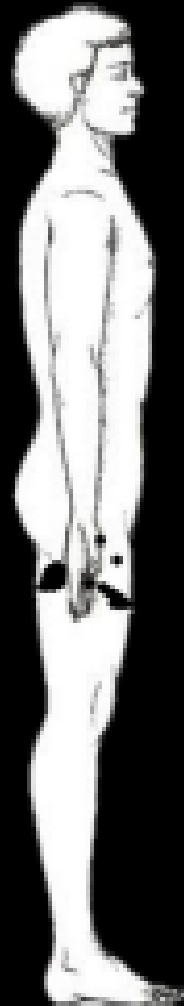
ANATOMICAL DIRECTIONAL TERMINOLOGY

Body Region



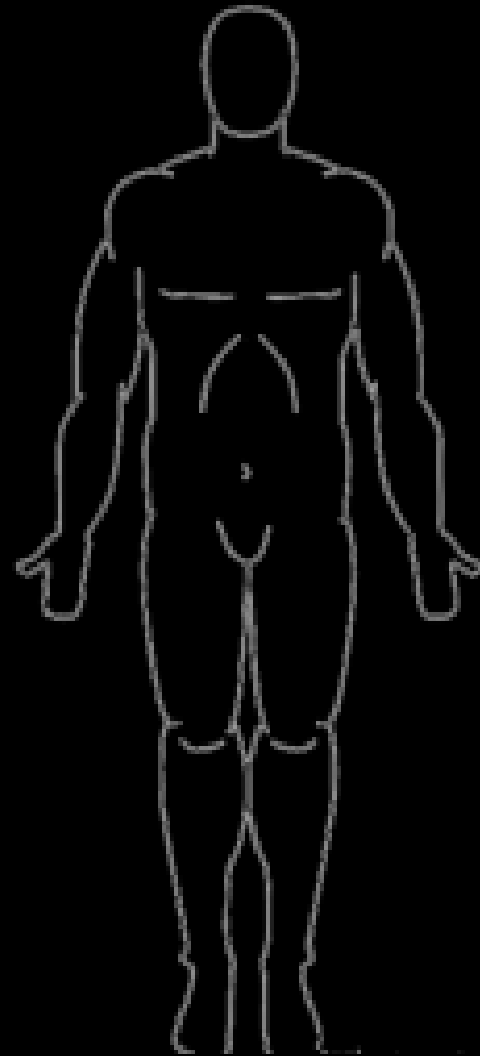
Anterior

Posterior



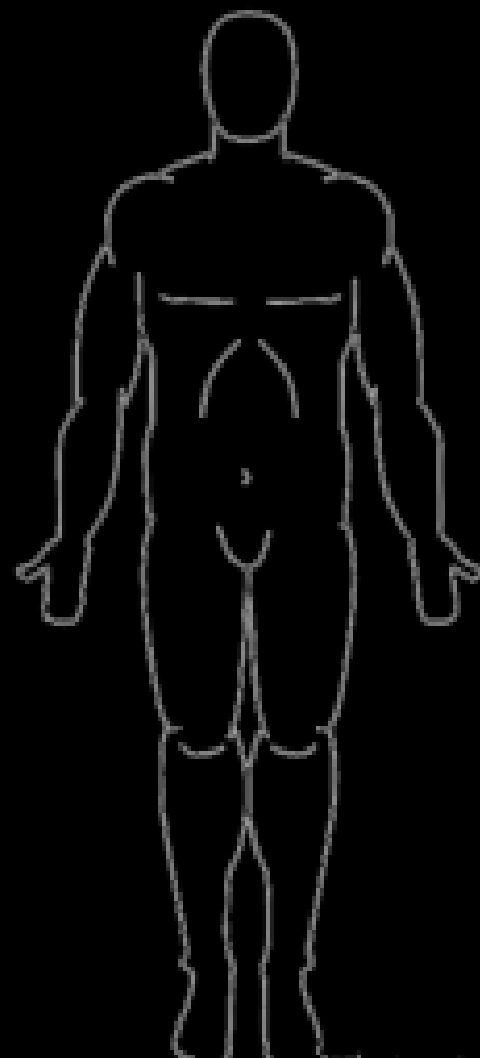
Medial

Lateral



Proximal

Distal



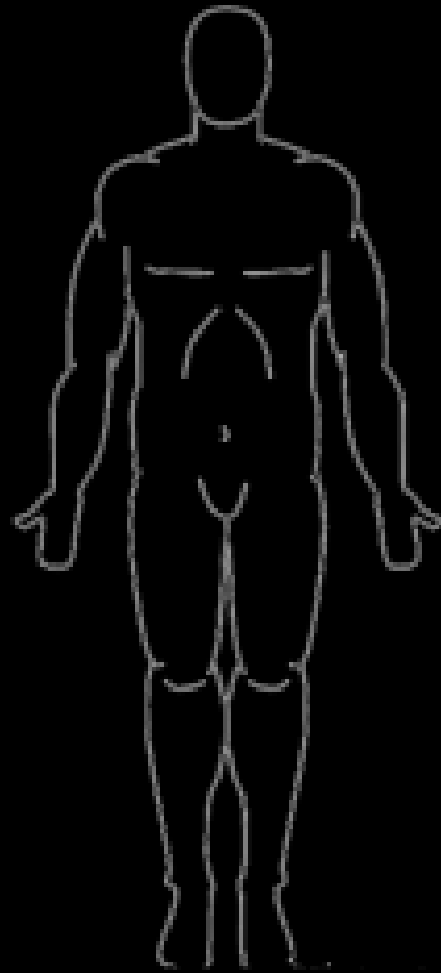
Superficial

Deep



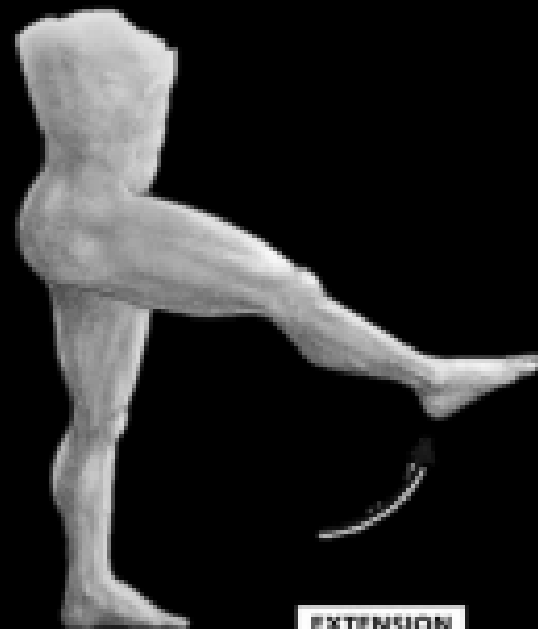
Ipsi- lateral

Contra - lateral



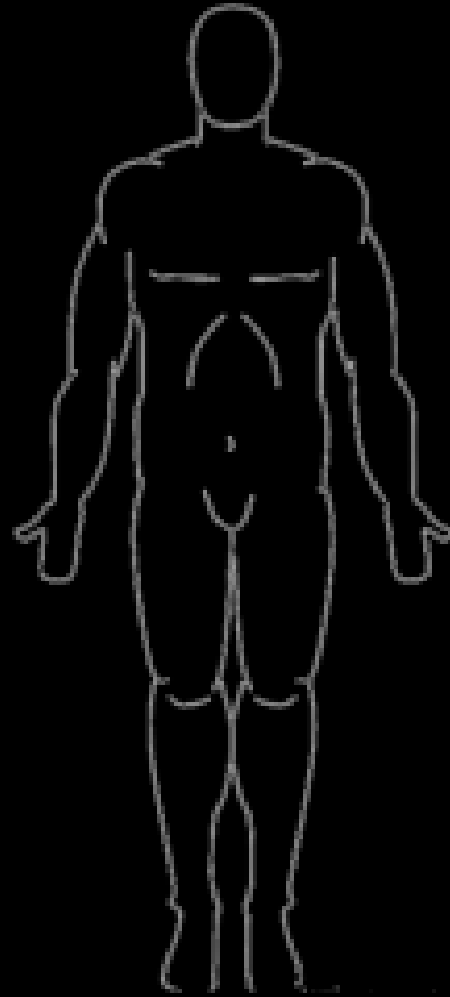
Flexion

Extension



Adduction

Abduction

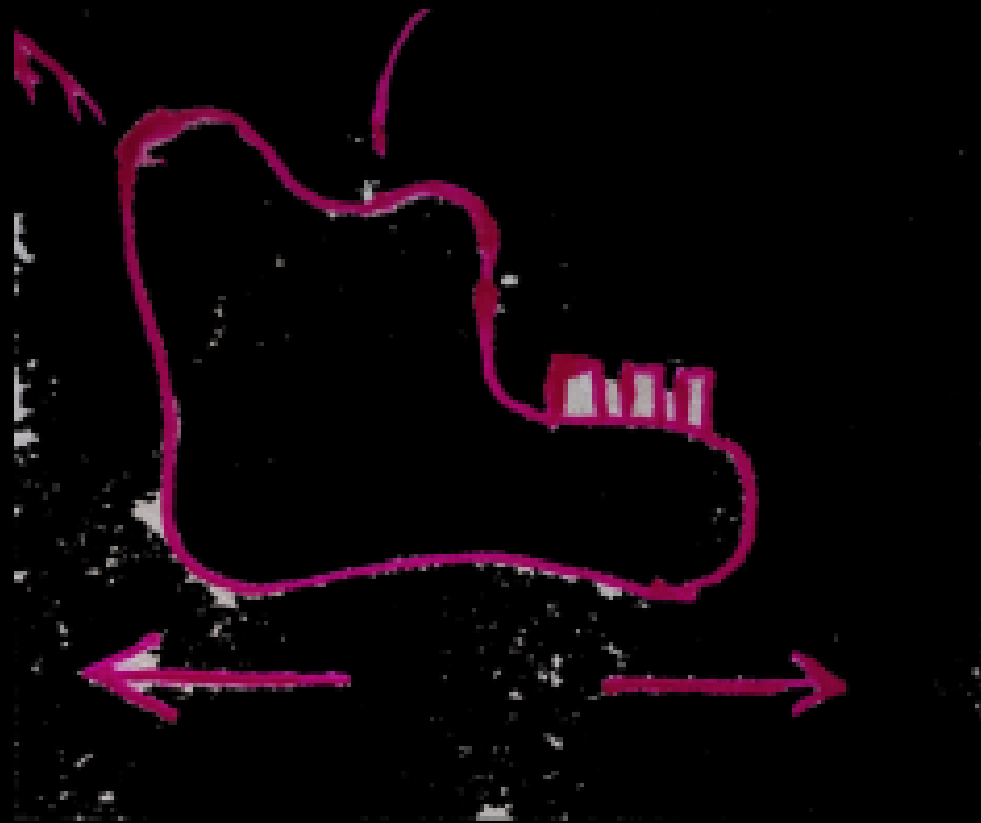


Circumduction

F + E + ADD + AB

Protraction

Retraction

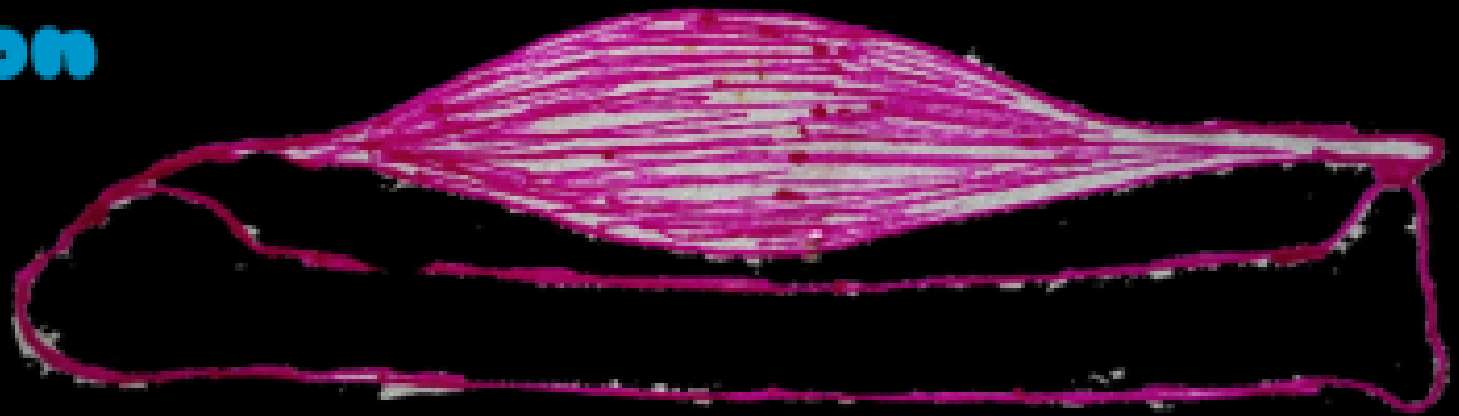


Muscle Terminology

Origin

Insertion

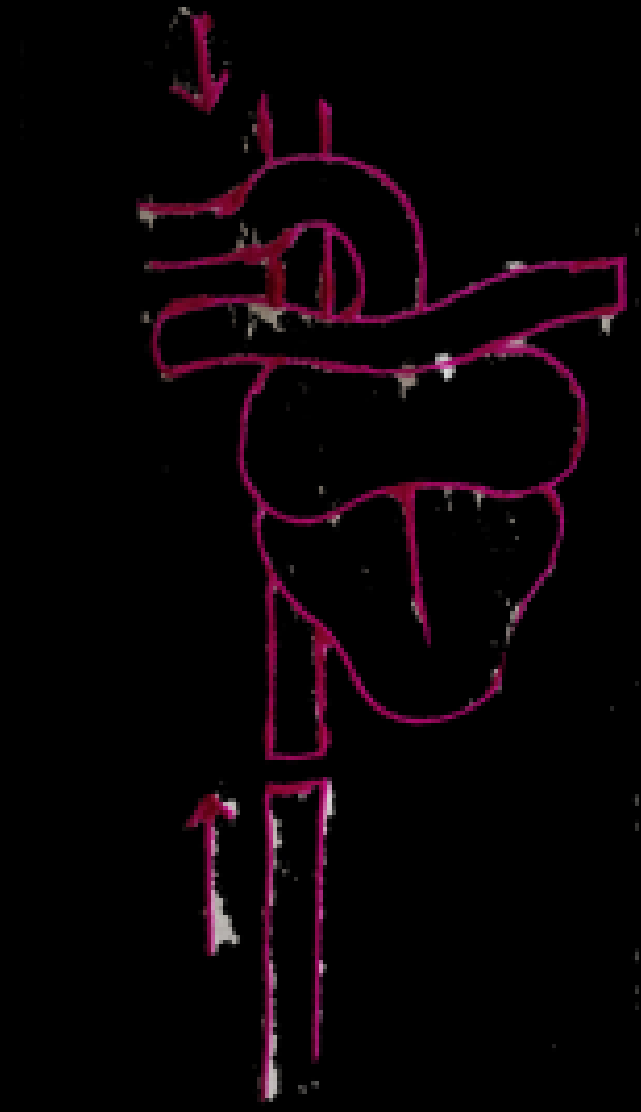
Belly



Artery



Vein



Capillaries



Terms Use in Clinical Anatomy

Suffix - itis

Suffix - Ectomy

Suffix - Oma

Terms Use in Clinical Anatomy

Edema

Thrombosis

Necrosis

Paralysis

Terms Use in Clinical Anatomy

Inflammation

Redness

Swelling

Pain

Temperature

Terms Use in Clinical Anatomy

Hyper- plagia

Meta - Plagia

Hypo - plagia

Terms Use in Clinical Anatomy

Carcinoma

Epithelium (Ectoderm, Endoderm)

Sarcoma

Connective Tissue (Mesoderm)